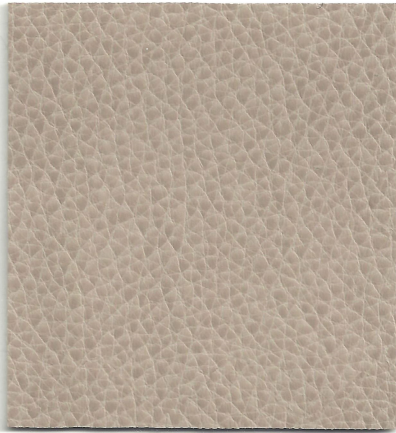


Montage



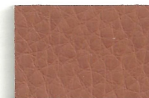
744-33373 Alpaca



744-53453 Gull



744-53493 Ghost



744-35553 Old Penny



744-25033 Copen Blue



744-53473 Smoke Gray



744-53483 Beechnut



744-14223 Firebrick



744-72313 Bluegrass



744-60883 Cast Iron



744-36513 Tarmac

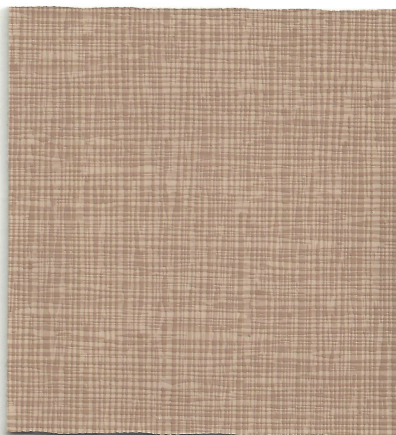


744-14423 Poinsettia Red



744-27863 Blue Graphite

Lino



740-34513 Haystack



740-58733 Coin



740-65783 Wigwam



740-34463 Cider



740-43323 Jadite



740-50143 Ore



740-33793 Hearth



740-82603 Adobe Red



740-43303 Verde



740-50193 Lead



740-34063 Trunk

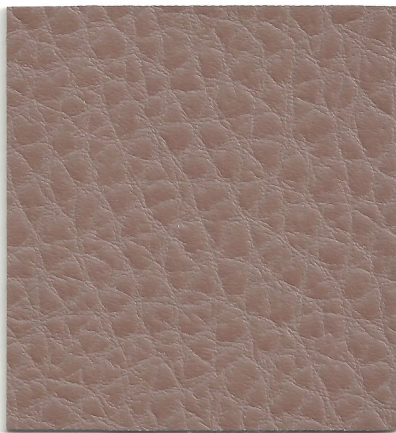


740-13943 Plum Wine



740-25123 Independence

Impasto



733-35143 Snickerdoodle



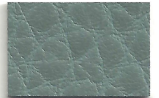
733-60943 Arctic Fox



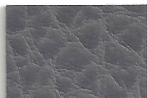
733-34673 Tofu



733-33903 Amberglow



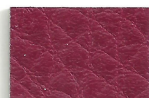
733-43563 Pine Needle



733-58843 Thunder



733-33853 Caribou



733-14413 Firecracker



733-72373 Genesis



733-60983 Black Spinel



733-34863 Pumpnickel



733-93543 Kalamata



733-27853 Deepwell

Impasto, Lino, & Montage Uf Select®

Application Interior Upholstery

General Specifications

Composition Polycarbonate Blended Surface | 65% Polyester, 35% Cotton Backing

Weight Approx. 12.53 oz. Per Square Yard | Approx. 425 Grams Per Square Metre

Thickness Approx. 0.95 Millimetres

Width 54 Inches | 137 Centimetres

Repeat None

Performance

Abrasion ASTM D4157 / 200,000 Double Rubs (Wyzenbeek)* | BS EN ISO 12947-2 / 150,000 Rubs (Martindale)*
*meets or exceeds

Hydrolysis 10 Weeks | ASTM D3690 Sect. 6.11 (Hydrolytic Stability) | ISO 1419 Method C (Accelerated Ageing)

Adhesion of Coating ASTM D751

Tear Strength ASTM D2261

Breaking Strength ASTM D751

Tensile Strength BS EN ISO 1421

Colorfastness

Light AATCC 16.3, 200 Hours, Grade 4 | ISO 105 B02, Grade 6

Crocking AATCC 8, Grade 4-5 Wet & Dry

Flammability Requirements

ASTM E84 (Adhered) - Class A | CA TB 117-2013 - Pass | FMVSS 302 & 95/28 Annex IV - Pass | NFPA 260 - Class 1 | UFAC - Class 1

These fabrics, when treated and/or used with other compatible furniture components, have been shown to perform under the fire test conditions of: BS 5852 Source 0, 1 & 5 (Cig, Match & Crib 5**) | BS EN 1021 Part 1 & 2 (Cig & Match)

For more information on our fabrics, cleaning and care instructions, please visit our website.

*Only in North America.

**Impasto does not pass Crib 5.

Not suitable for all markets and applications. Please contact your sales representative for more information.



800.543.0448 | miamicorp.com

ultrafabricsinc.com
Ultrafabrics® and logo, and Uf Select® are registered
trademarks of Ultrafabrics Inc. Made in Mexico.

4/23

