

# MAHALO



Black  
MHL-1000



Sandstone  
MHL-1040

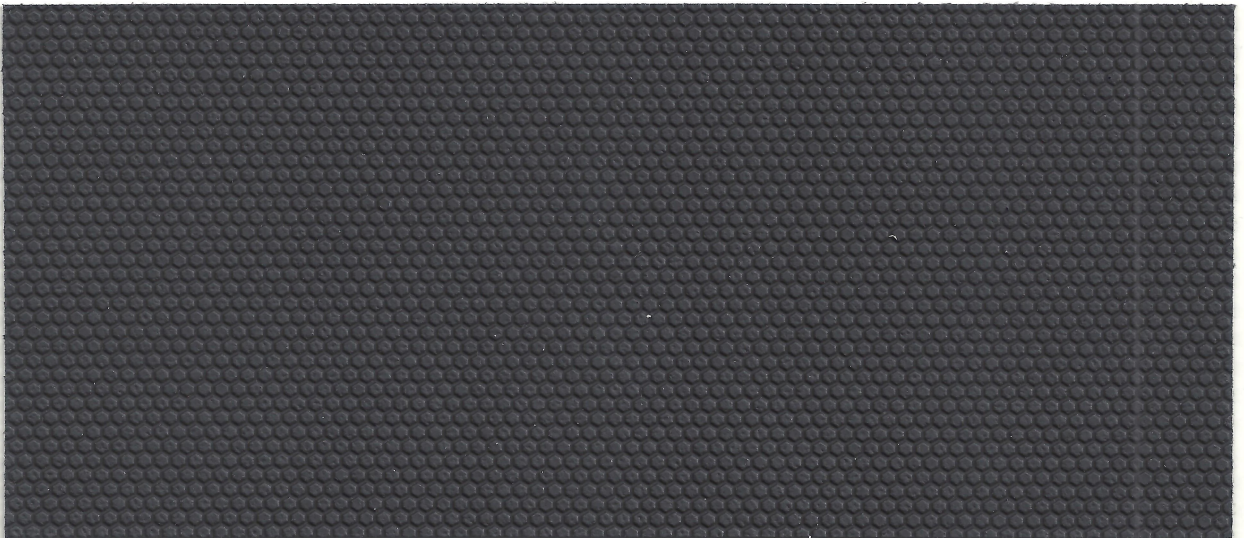
Taupe  
MHL-1050

Granite  
MHL-1030

Graystone  
MHL-1020

Mist  
MHL-1010

# KONA



Black  
KON-8005



Sandstone  
KON-8045

Taupe  
KON-8055

Granite  
KON-8035

Graystone  
KON-8025

Mist  
KON-8015

MAHALO & KONA are manufactured to meet the following typical properties.

### Mahalo Specifications:

Width ..... 54"  
 Roll Size..... 30 yds  
 Mahalo Black (MHL1000) comes in 40 yd rolls  
 Thickness..... 0.8 mm  
 Nominal Weight.....18 oz. per Lin. Yard  
 Contents..... PVC  
 Backing ..... Polyester  
 UV Stabilized Pigments.....300 hours minimum  
 Cold Crack .....-10°F  
 Abrasion Resistance ... Wyzenbeek (100K cycles #10 cotton duck)

### Kona Specifications:


Width ..... 54"  
 Roll Size..... 30 yds  
 Thickness..... 0.9 mm  
 Nominal Weight.....19 oz. per Lin. Yard  
 Contents..... PVC  
 Backing ..... Polyester  
 UV Stabilized Pigments.....300 hours minimum  
 Cold Crack .....-10°F  
 Abrasion Resistance ... Wyzenbeek (100K cycles #10 cotton duck)

### Meets Flammability Requirements\*:

Motor Vehicle Safety Standard 302  
 California Technical Bulletin 117-2013, Section 1\*\*  
\*This term and any corresponding data refer to typical performance in the specific test indicated and should not be construed to imply the behavior of this or any other material under actual fire conditions.  
 \*\*This product, when tested with suitable component materials, may comply with California Technical Bulletin 117-2013, Section 1.

### Suggested Applications:

Automotive, General Seating, General Sewn Products, Office, Residential

 **A** \* This fabric meets or exceeds these ACT performance guidelines. Certification Marks owned by ACT.

### Cleaning Instructions:

These products should be cleaned with mild soap and water. Do not use alcohol based cleaners.

ENDURATEX™ is a trademark of CGPC America Corp.  
 and may not be used without written permission of CGPC America Corp.

