

MARINE CARPET

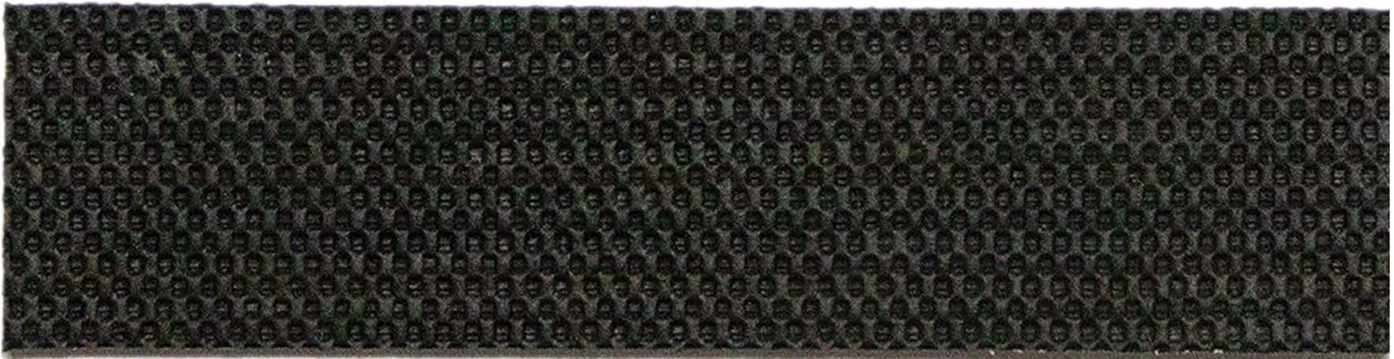
Berber



CA5510 Grey 8'6"

FlexBac Backing

Snapbac



CA5101 Snapbac Rubber Backing 6'

For use with 6' Aquaturf

**Ideal for narrow width snap down applications*

Aquaturf



CA5801 Royal Blue 8'6"



CA5727
Charcoal 8'6"

CA5627
Charcoal 6'



CA5825
Black 8'6"

CA5625
Black 6'



CA5745
Smoke 8'6"

CA5645
Smoke 6'



CA5710
Marble Grey 8'6"

CA5610
Marble Grey 6'



CA5717
Light Beige 8'6"



CA5718
Sunset 8'6"



CA5704
Driftwood 8'6"



CA5650
Metallic Grey 6'



CA5762
Teal 8'6"



CA5719
Indigo 8'6"

Berber

Width - 8 ft - 6 in
100% UV Stabilized Polypropylene
29 oz./sq. yd.
25 yds per roll
Suitable for Snap-In and
Glue Down Installations
New FlexBac backing reduces the overall carpet
weight while maintaining its strength and
dimensional stability

SnapBac

6 Ft. Wide / 48.5 oz. per sq. yd.
SnapBac backing allows you to convert standard glue-
down marine carpet for use in snap-in installations

Aquaturf

14 oz./sq. yd.
33 yds per roll
Low Water Retention
UV Light Stabilized
100% UV Stabilized Polypropylene
Mildew and Moisture Resistant
Limited Color Fade Warranty
Glue-in applications only
Glue to SnapBac for a snap-in installation

Maintenance Procedure

A regular program of routine maintenance procedures will greatly
aid in the appearance retention and wearability of the carpeting.
Use a cleaning solution of warm water and household detergent.
Soak carpeting for approximately 5 minutes then rinse with clean
water. If stubborn stains occur, a broom or soft bristle brush should
be used to GENTLY brush the stained areas to assist in lifting the
stain. Then repeat detergent cleaning procedure.



800.543.0448 | miamicorp.com

