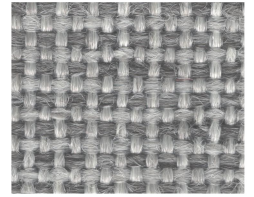
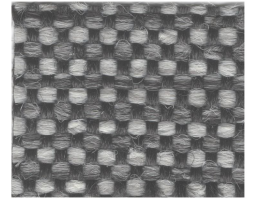


EBONY GM20



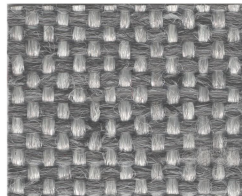
SILVER GM39



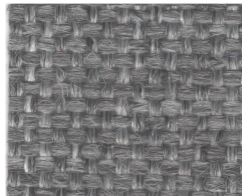
SLATE GM40



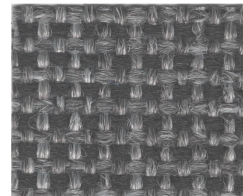
GREY MIX GM22



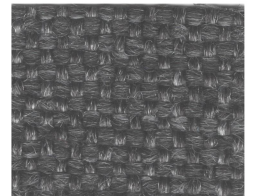
STEEL GM41



DARK GREY GM15



METAL GM27



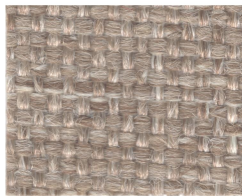
CHARCOAL GM09



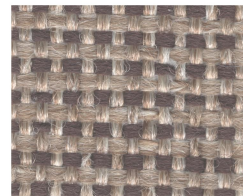
NUTMEG GM33



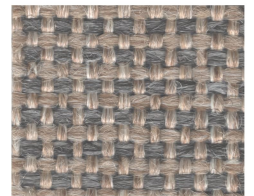
OATMEAL GM34



BROWN HAZE GM05



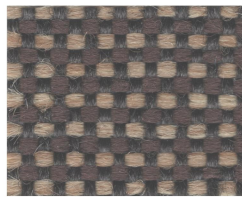
DESERT GM19



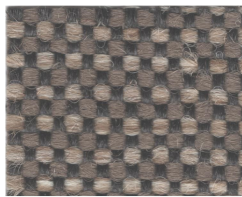
TRUFFLE GM43



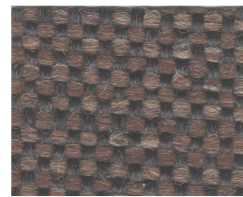
TOAST GM42



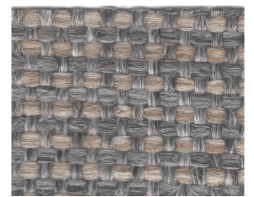
CASHMERE GM07



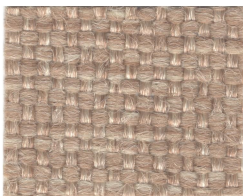
COBBLESTONE GM12



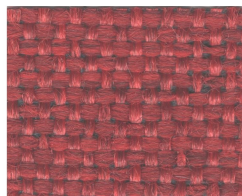
ESPRESSO GM21



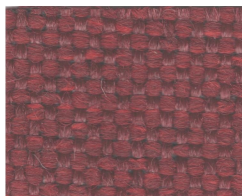
ASH GM03



DARK OATMEAL GM16



CRIMSON GM13



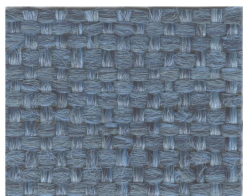
CAYENNE GM08



MAROON GM26



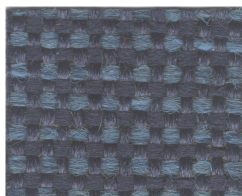
DEEP GREEN GM17



ACADEMY BLUE GM01



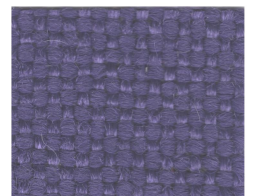
NORDIC GM32



MIDNIGHT GM28



NAVY GM30



NEW PURPLE GM31

Gemini Specifications

Content: 100% Polyolefin

Width: 54"

Backing: Acrylic

Weight: 16 oz. ± 0.5 oz. per linear yard

Abrasion: Exceeds 100,000 double rubs (ACT approved wirescreen)

Lightfastness: Class 5

700 hours of UV stability

Chemically inert and hydrophobic

Will not absorb spills or stains

Mildew resistant

Non-allergenic

Not affected by chemicals

Static resistant (less than 2.0 kv at 20% RH)

Flammability

California Technical Bullet 117 Section E Class | Pass

UFAC: Class | Pass

NFPA 260 Cigarette Ignition: Class | Pass

MVSS 302: Class | Pass

Easy Maintenance

All commercial cleaning agents and solvents can be used

"WS" For water-based stains use water-based cleaning agents

"WS" For oil based stains use solvent cleaner

Made in the USA

Berry Compliant

Limited Lifetime Warranty - For All Indoor Applications



miami[™]
CORPORATION

miamicorp.com

| 800.543.0448