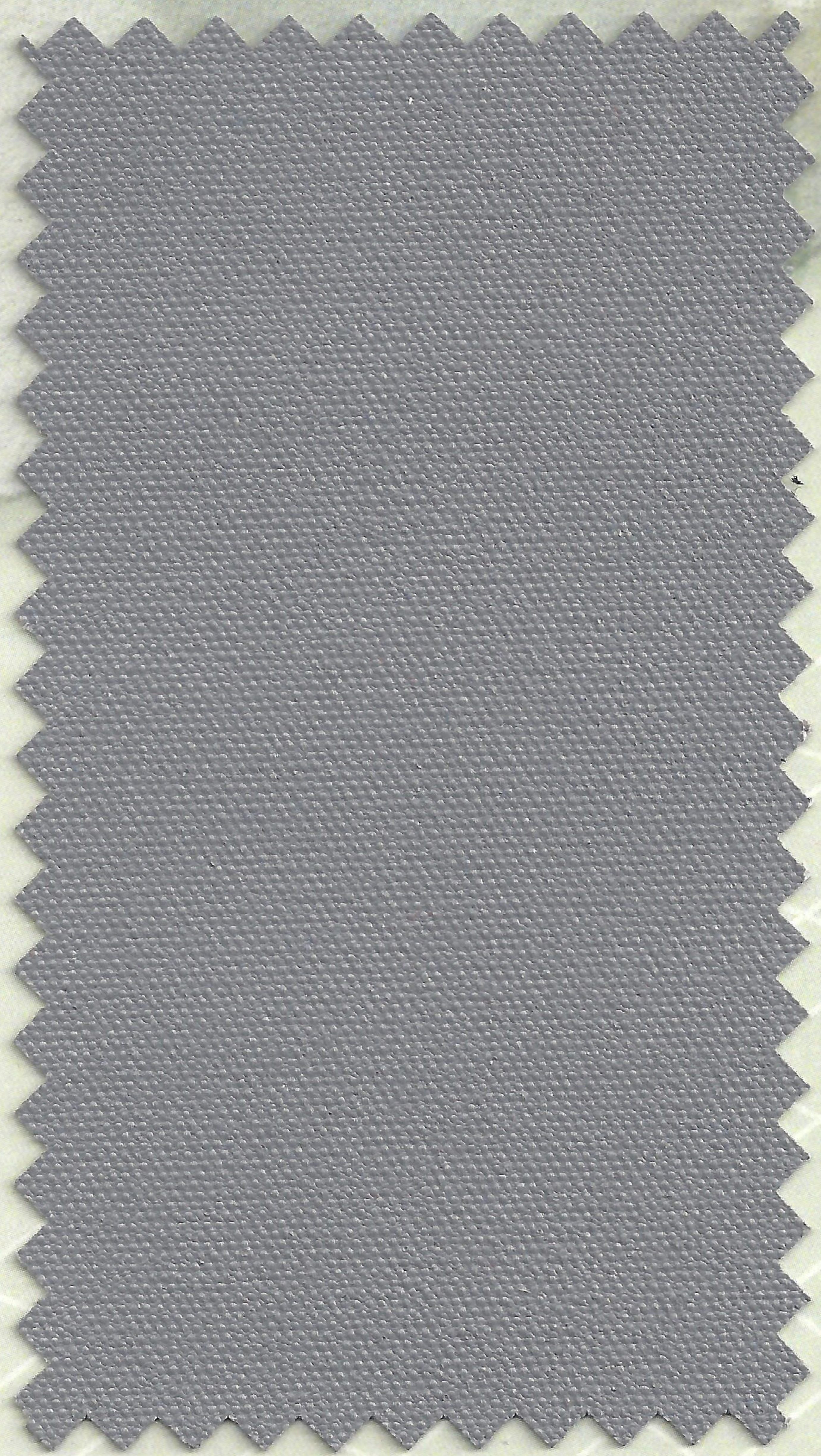


TOP GUN® 9

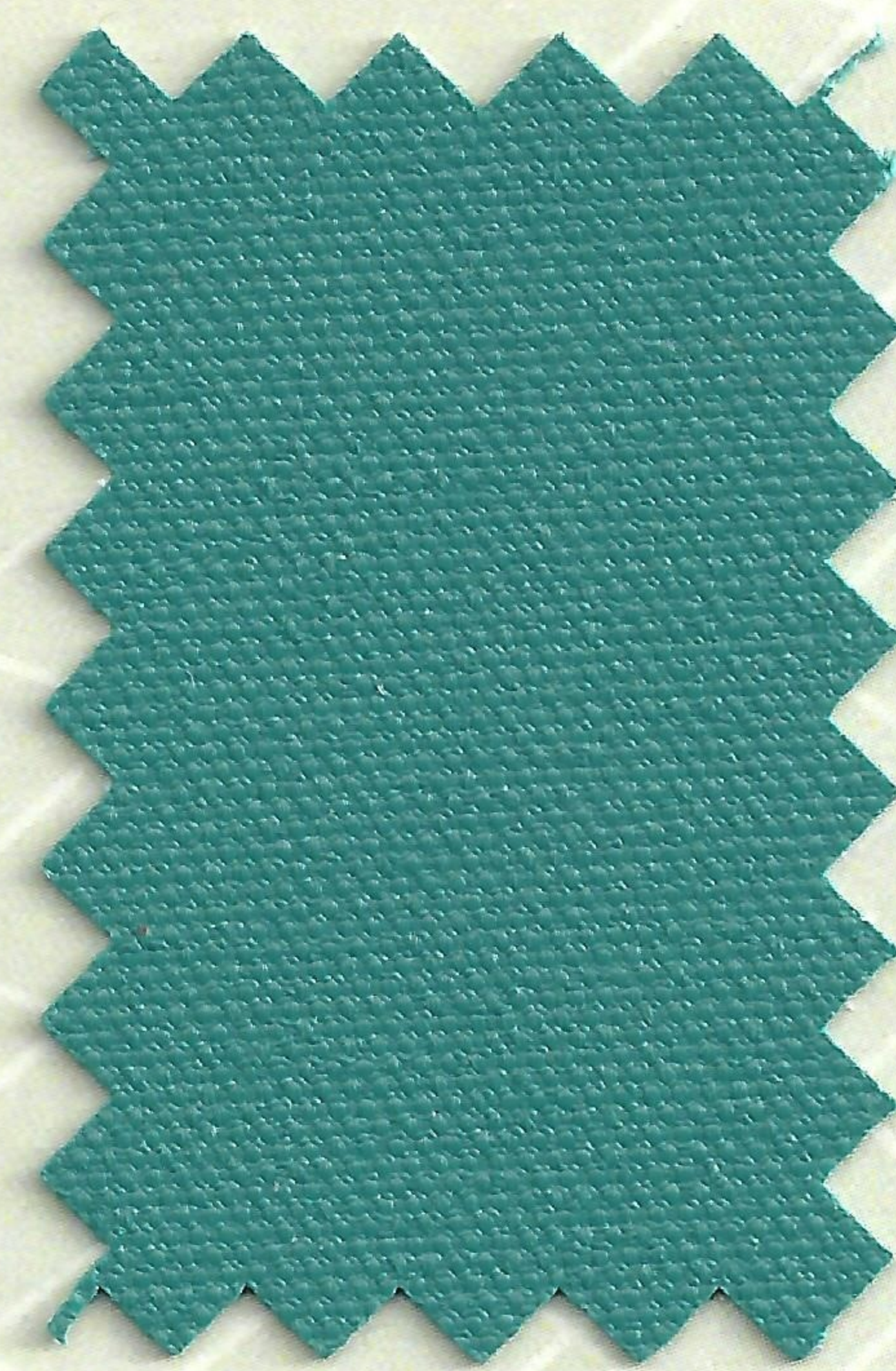
Acrylic Coated Polyester



858 Charcoal



862 Aquamarine



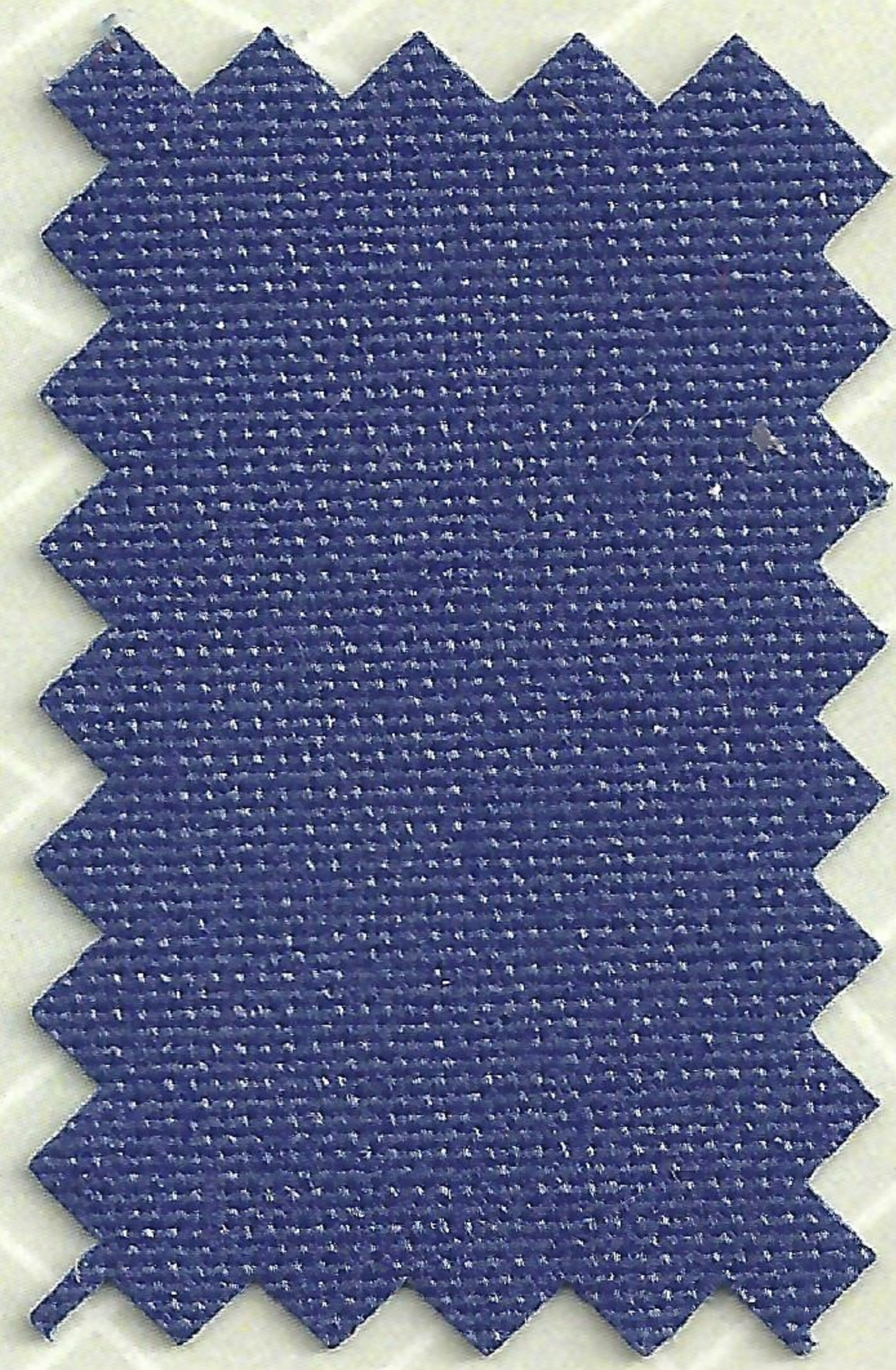
878 Teal



866 Turquoise



879 Forest Green



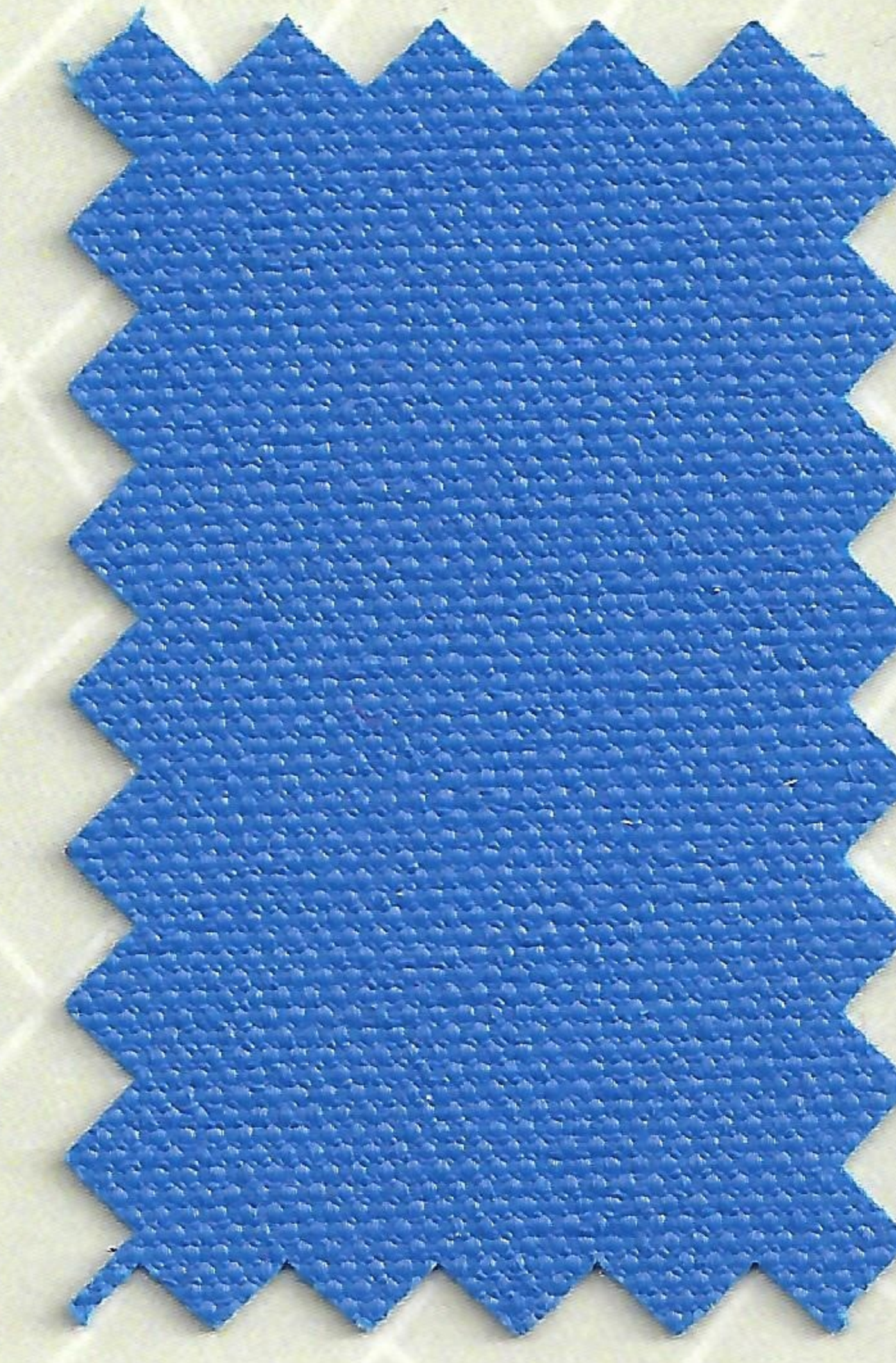
864 Royal Blue*



873 Harbor Blue



874 Navy Blue



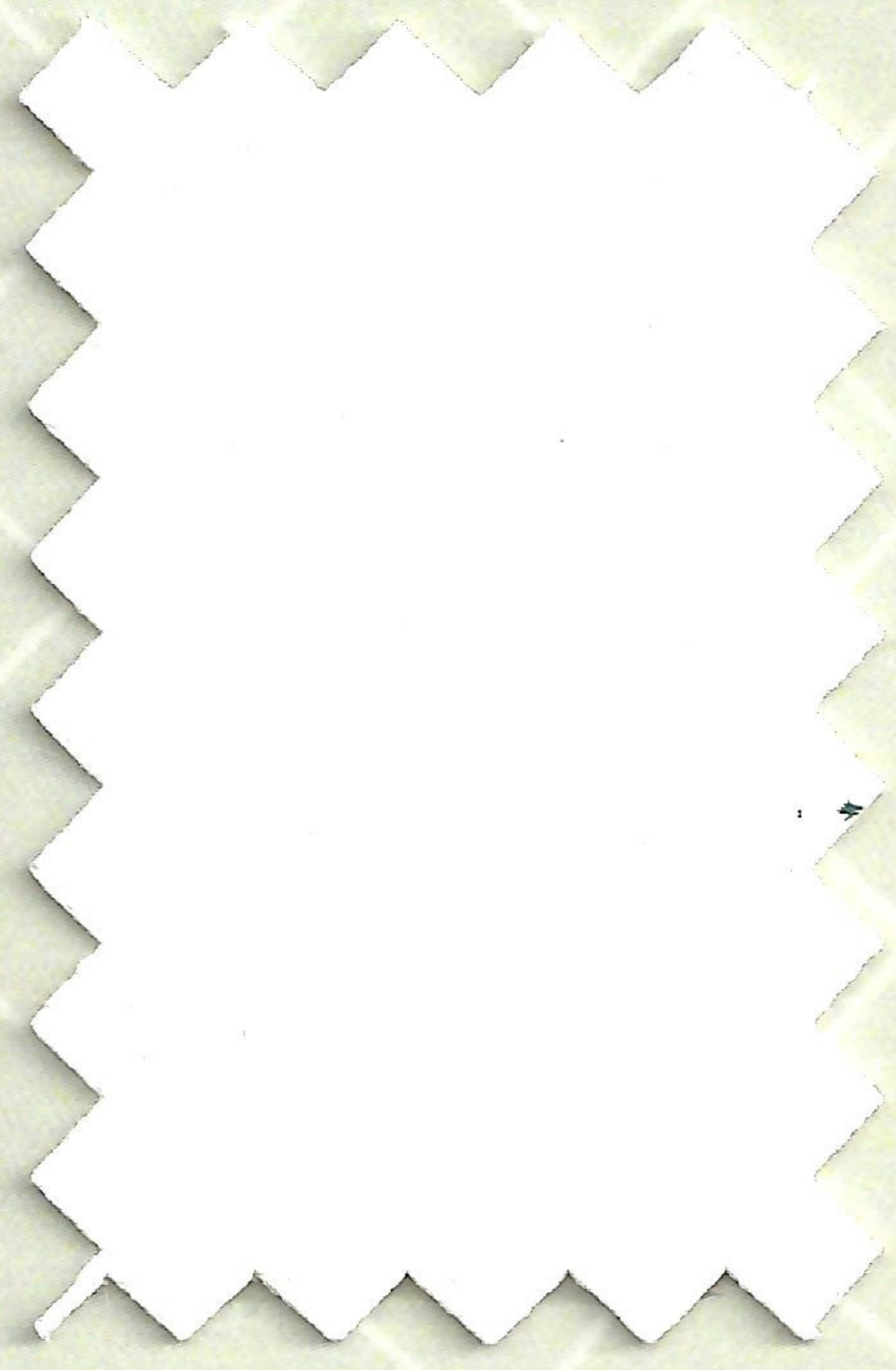
863 Caribbean Blue



867 Sea Gull Gray



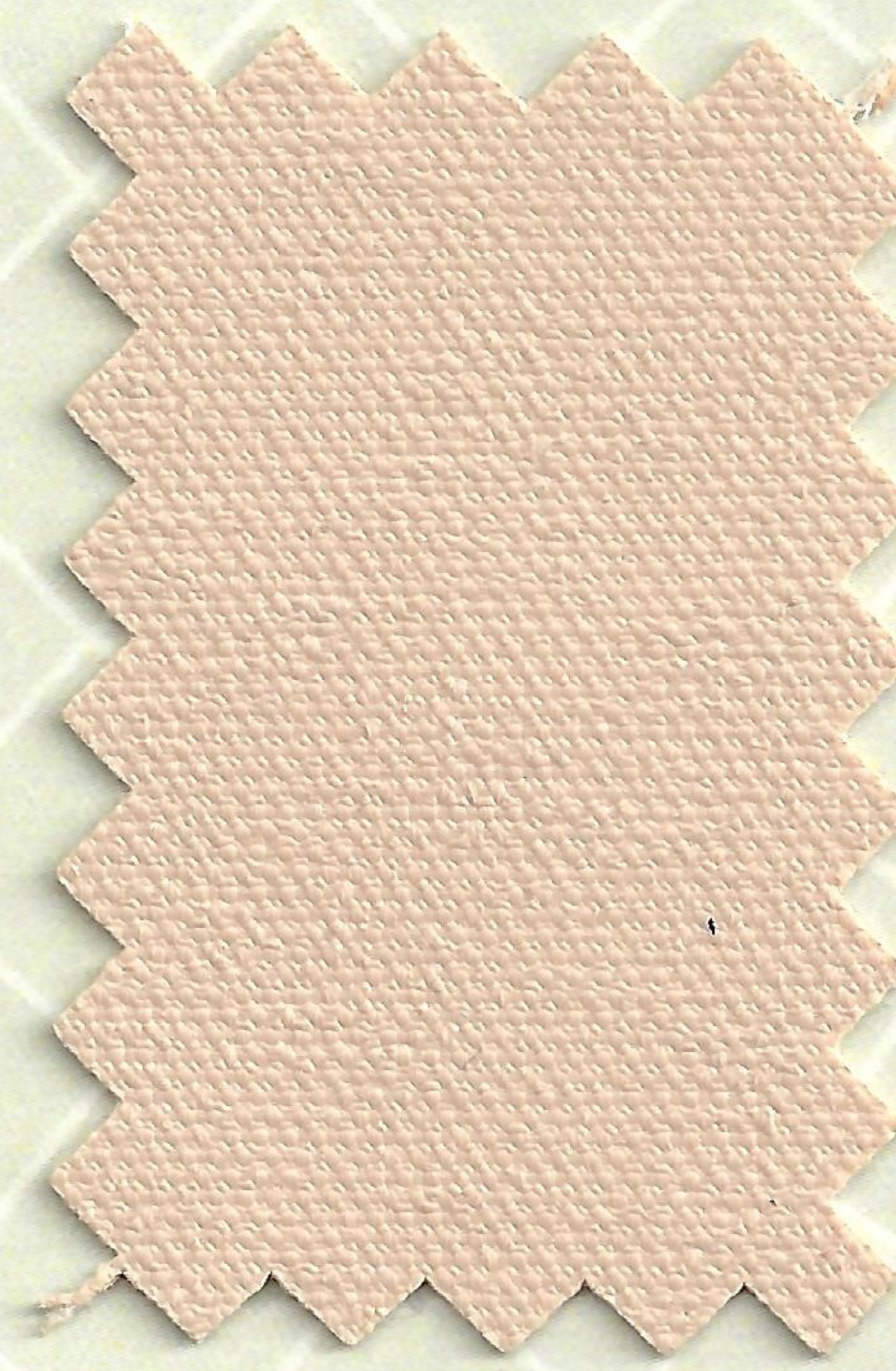
871 Onyx Black



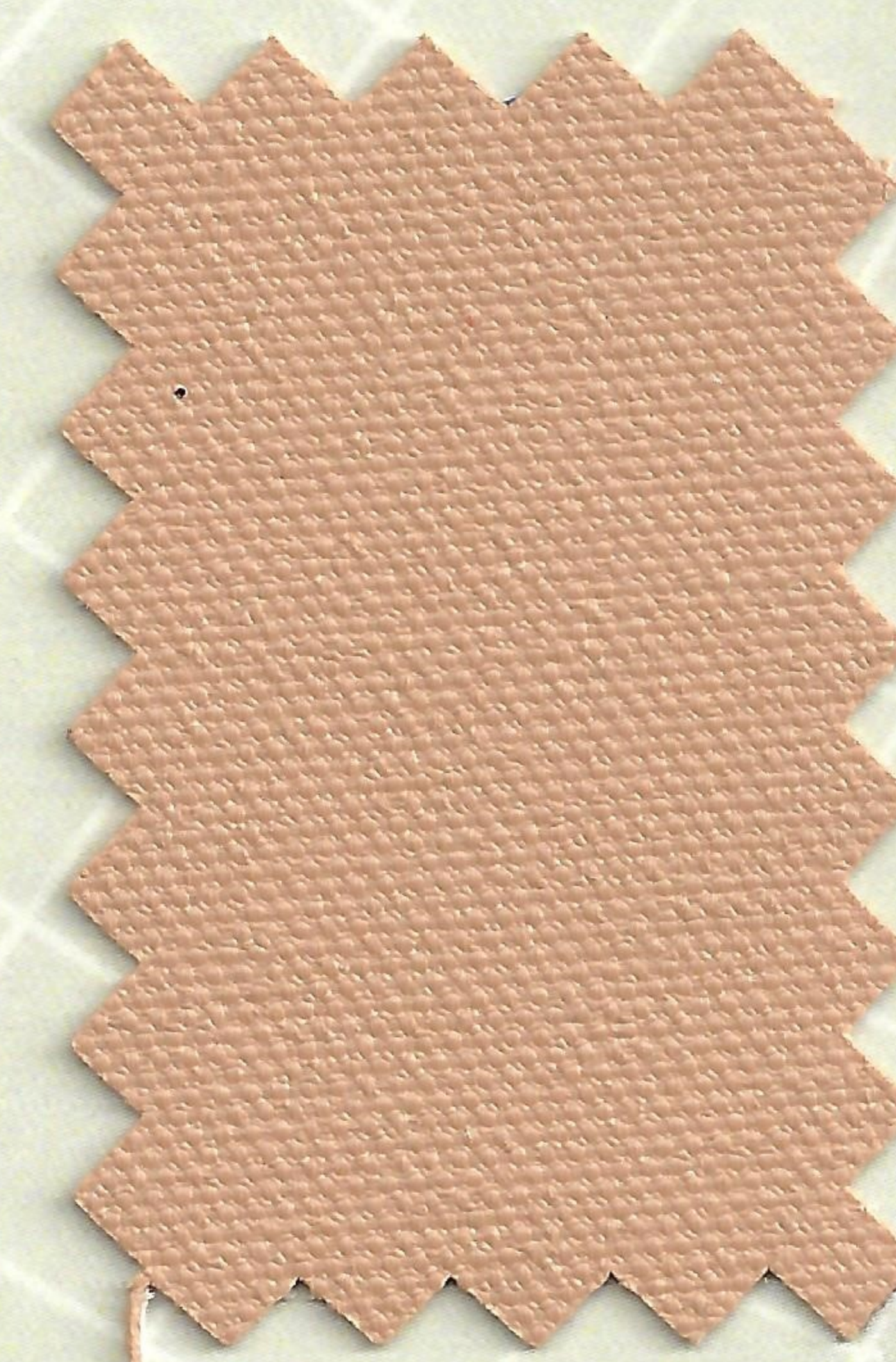
868 Arctic White



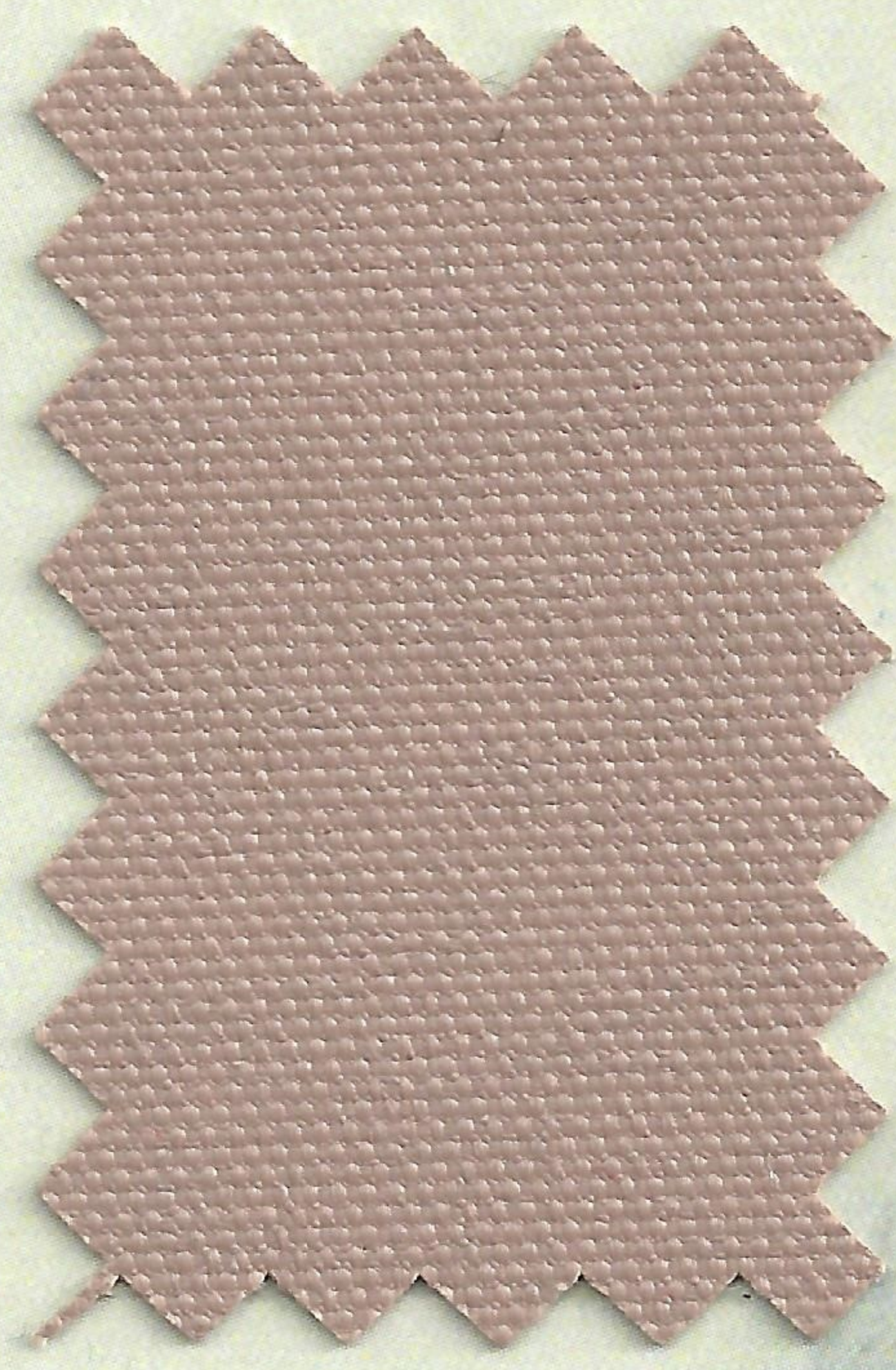
872 Birch



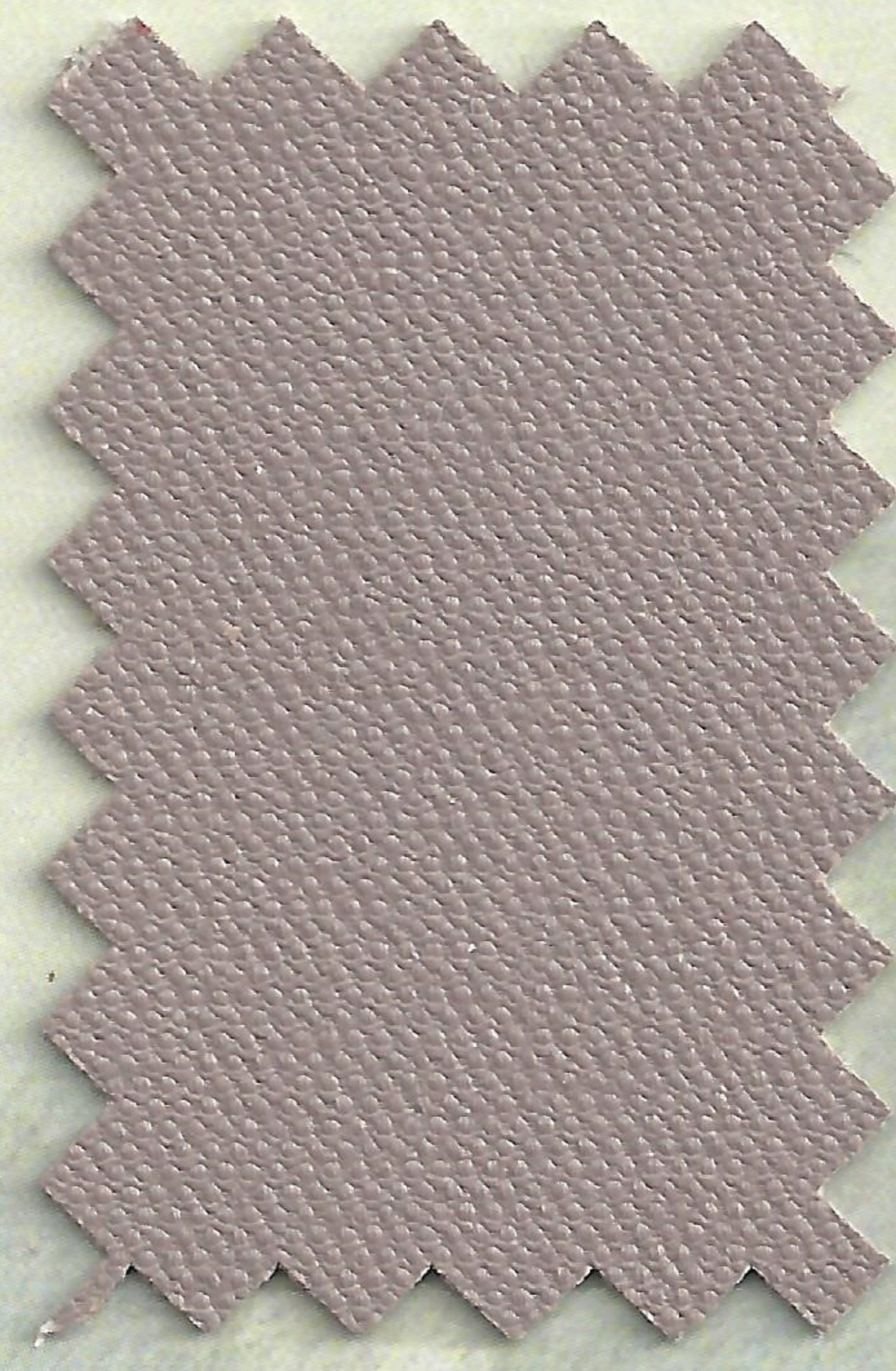
861 Sand



870 Buckskin Tan



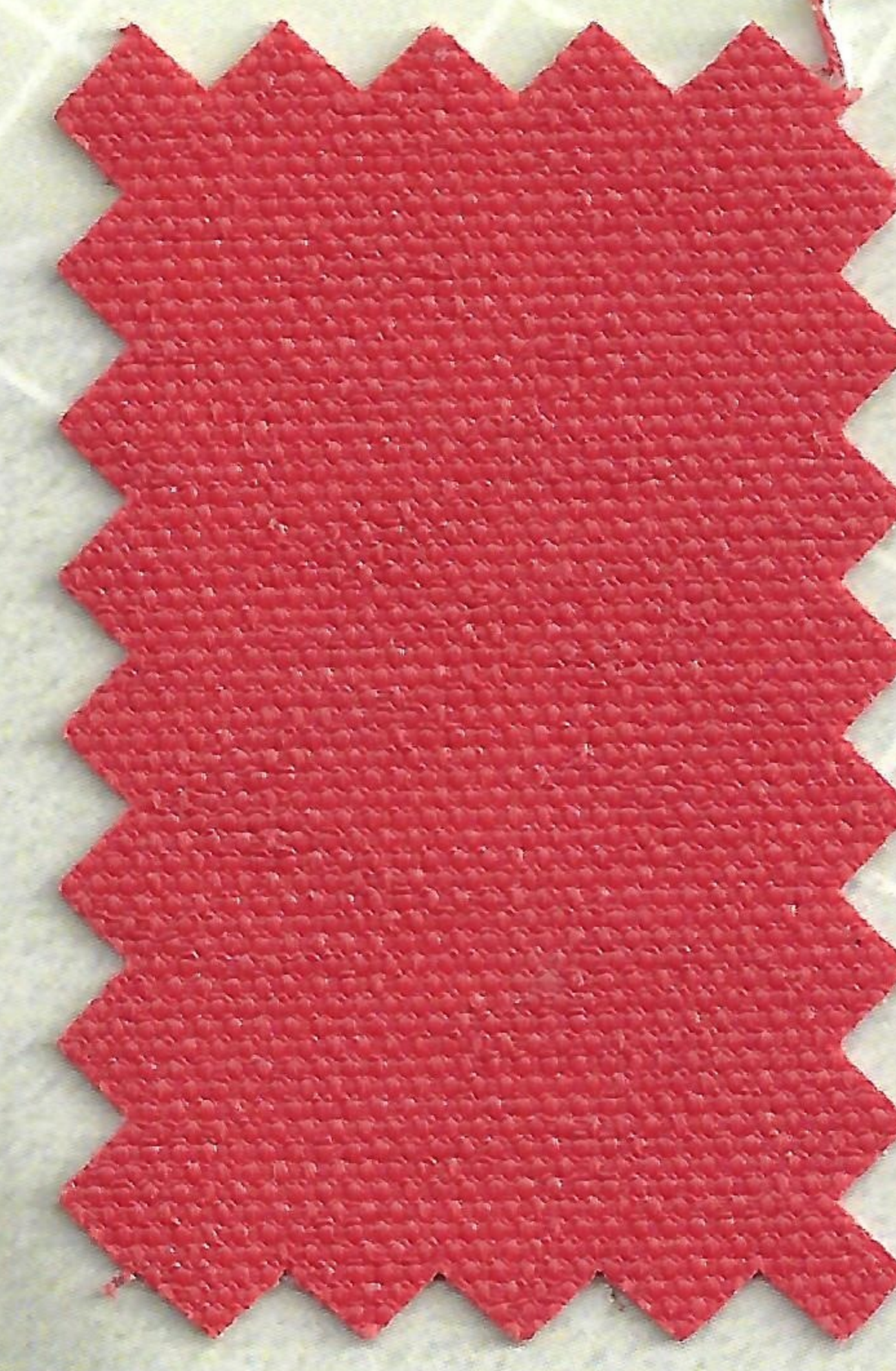
865 Hemp Beige



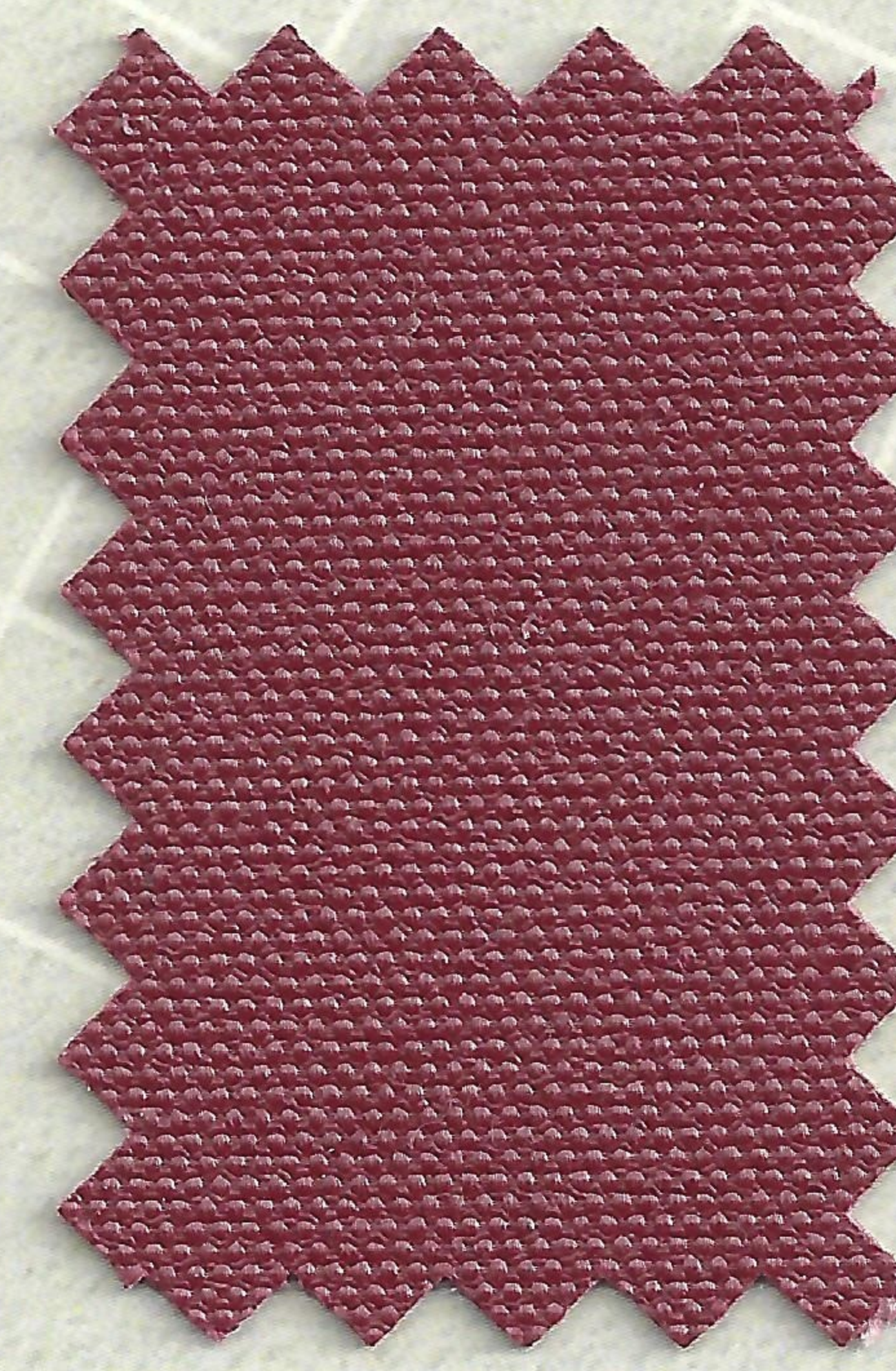
859 Taupe



869 Chocolate Brown



877 Sunset Red*



876 Burgundy*



Marlen Textiles

* Premium Color, subject to change

TOP GUN[®] 9

Top Gun 9 is an acrylic coated, 100% woven polyester fabric (450 denier) utilizing a proprietary formula and process to coat the top and bottom, allowing the fabric to be completely reversible. As part of the Top Gun family of premium coated fabrics, it is characterized by excellent strength, durability, tear and abrasion resistance, dimensional stability, UV and mildew resistance. Top Gun 9 is a medium weight fabric that provides long lasting durability without the high cost and weight of heavier fabrics with better performance than similarly priced fabrics. Top Gun 9 can be used for many outdoor applications such as marine tops, trailer covers, bimini tops, gazebos, canopies, tarps, playground equipment covers, BBQ grill covers, patio furniture covers and many other useful applications.

Top Gun 9, a mid-weight alternative.

TECHNICAL DATA

Characteristic	TOP NOTCH [®]	TOP NOTCH 9 [®]	TOP NOTCH 1S [®]	TOP GUN [®]	TOP GUN 9 [®]	TOP GUN 1S [®]	ODYSSEY [®]
Width, inches	60	60 & 2 meters*	60	62 & 2 meters*	62	60	64
Roll Size, yards	50	50	50	50	50	50	75
Weight, oz/yard ²	11.5	9.0	7.5	11.5	9.0	9.0	6.5
Tensile (lbf), Warp x Fill	500+ x 460	500+ x 300	320 x 255	500+ x 388	360 x 250	480 x 340	297 x 220
Tongue Tear (lbf), Warp x Fill	46 x 38	30 x 22	29 x 25	40 x 32	30 x 29	38 x 30	22 x 20
Spray Rating	100	100	100	90+	90+	90+	90+
3 Drop Rating (cm)	36	40	82	76	71	76	51
Warranty Period (years)	8	8	5	5	4	5	3
Breathability (g/m ² /24 hr.)	645	700	260	116	100	180	87
Shrinkage (%), Warp x Fill	0 x 0	0 x 0	<1 x 0	0 x <1	0 x 0	0 x 0	0 x <1
Stretch (%), Warp x Fill	<1 x <1	<1 x <1	<1 x <1.5	<1 x <1	<1 x <1	<1 x <1	<1 x <1

*Select Colors

Marlen Textiles



miami[™]
CORPORATION

800.543.0448