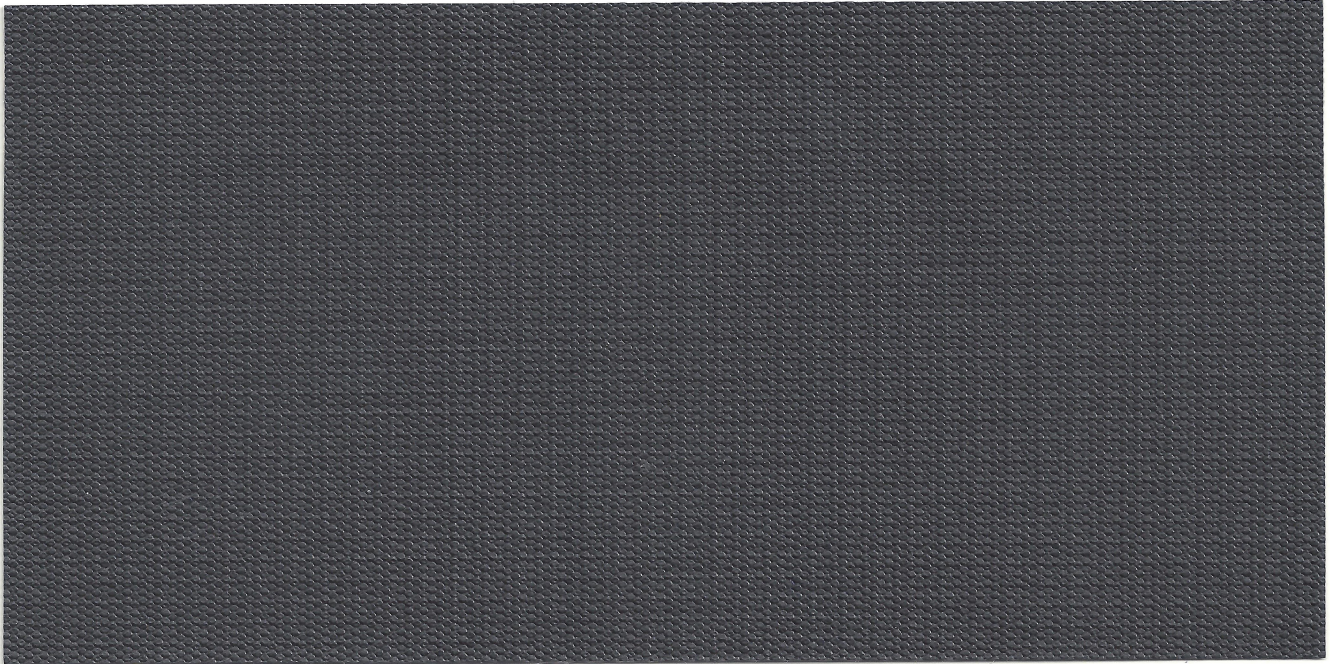


WEATHERYTE® PROOF 11/61

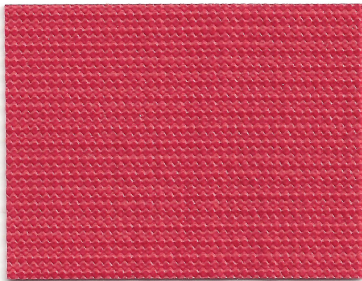
7 YEAR WARRANTY | 11 OZ | 61 IN



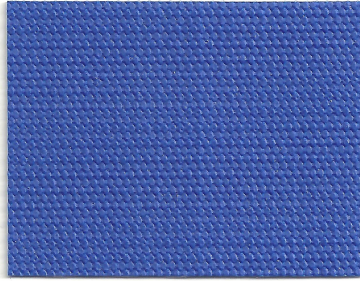
SIGN & SHADE
SOLUTIONS



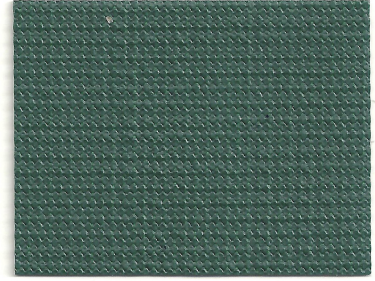
WTY24PRF Black



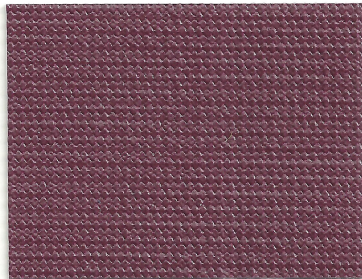
WTY11PRF Red*



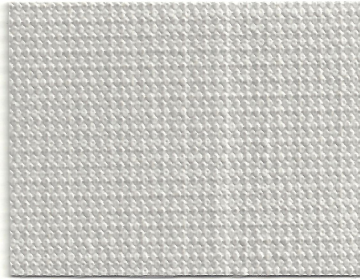
WTY416PRF Pacific Blue



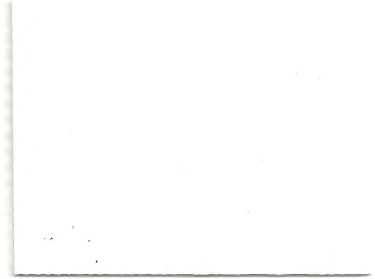
WTY5PRF Forest Green



WTY73PRF Burgundy*



WTY79PRF Silver*



WTY15PRF White

**Premium Color*

800.543.0448 | miamicorp.com



miami
CORPORATION



Weatherlyte® Proof 11/61 is the perfect combination of performance, value, workability and aesthetics designed specifically for commercial use where flame retardant fabrics are required. This waterproof and lightweight fabric-look outdoor FR textile offers a finish optimized for use with digital graphics (solvent, UV, and latex printers) along with pressure-sensitive films. Heat sealable without tape, this FR fabric is the perfect choice for any establishment including retail stores, restaurants, hotels, public buildings, strip malls that may require awnings, canopies, walkways, signage or shade structures. Superior color retention and UV protection with a 7-year warranty.

Added Benefits:

- Embossed for textured fabric effect
- Waterproof
- Lightweight & Flexible
- FR Certified
- Fully graphic and print receptive (paint, screen, digital, PSV)

Coated Fabric	Standard	Metric
Finished Weight	11 oz/yd ²	373 g/m ²
Width	61 inches	155 cm
Coating Type	PVC	
Seaming Properties	Dielectric & Thermal	

Material Properties	ASTM Test Methods	Standard	Metric
Tensile Strength, Grab (Warp)	D751	220 lbs	979 N
Tensile Strength, Grab (Fill)	D751	150 lbs	667 N
Tear Strength, Tongue (Warp)	D751	50 lbs	222 N
Tear Strength, Tongue (Fill)	D751	30 lbs	133 N
Screwdriver Puncture	D751	40 lbs	178 N
Ball Puncture	D751	200 lbs	890 N
Hydrostatic Resistant	D751	250 psi	1.7 MPa
Abrasion Resistance (H18/1 kg)	D3389	200 cycles	
Low Temperature Bend	D2136	0°F	-18°C
High Temp, Cont/Interm.	D1204	180/200°F	82/93°C
Mildew/Fungus Resistance	G21	No Growth	
Flame Resistance	E84	Class A	
	NFPA 701 (Small Scale)	Pass	
	NFPA 701 (Large Scale)	Pass	
	California State Fire Marshall	Pass	

Custom colors are available upon request.

The information contained herein or that is supplied by us, or on our behalf, is based upon data obtained through our own research and is considered accurate. However, no warranty is expressed or implied regarding the accuracy of this data, the results obtained from the use thereof, or that any such use will not infringe upon any patent. This information is furnished upon the condition that the person receiving it shall evaluate its suitability for the specific application.

